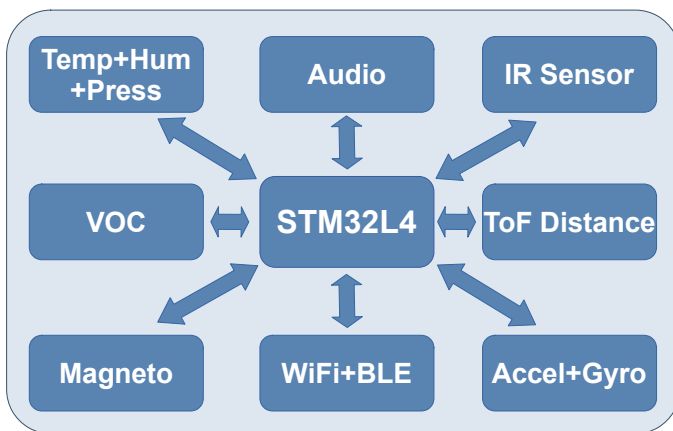
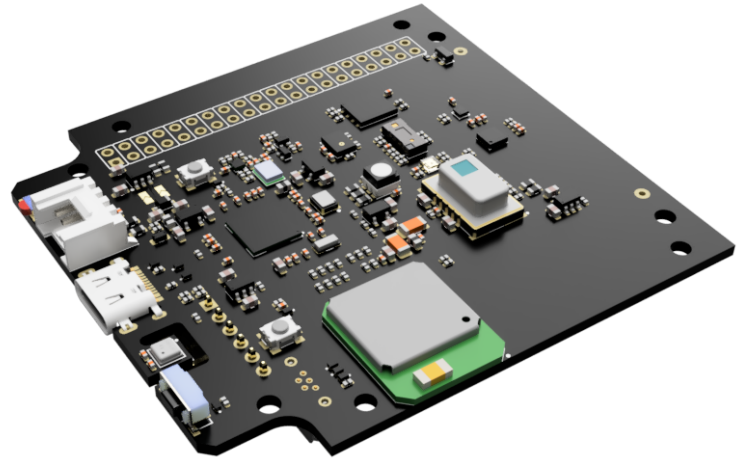


GENERAL DESCRIPTION

The **Mayreau** Raspberry PI format board features a powerful and Ultra Low Power Cortex M4 processor and a rich assortment of sensors from STMicroelectronics.

Low Consumption WiFi and BLE wireless communication links the sensors to the cloud !

The board can be programmed with STM32CubeIDE and tools to unleash the full power of the MCU.



FEATURES

The **Mayreau** board features a complete assortment of sensors for multiple uses.

Hardware Features

MCU Core:

- ARM® Cortex®-M4+ CPU at 120 MHz
- 2048 kBytes Flash
- 640 kBytes RAM
- -40 to 85°C operating temp. (125 °C available)
- Voltage range 1.71 V to 3.6 V
- Low power modes down to 0.29 µA
- Run at 43 µA / MHz
- 12 bit ADC up to 5 MSPS

WiFi+BLE 5.0:

- WE310F5-I from Telit
 - WiFi 802.11 b/g/n
 - BLE 5.0

Sensors:

- BHI160B accelerometer + gyroscope
- BMM150 magnetometer
- BME688 pressure, temperature, humidity & VOC
- IMP34DT05 digital audio
- IMP23ABSU analog audio, ultrasound
- TSL25911FN light sensor
- VL53L3CX 8x8 multitarget ToF proximity
- AMG8833 8x8 IR thermal sensor

Target Applications:

- 24/7 always-on sensor processing at ultra-low power consumption.
- IoT Battery powered devices
- Environmental Monitoring
- Smart metering, Industrial monitoring and control, Home energy management systems, Smart parking,
- Smart Building, Building Information Management Systems

BlackIoT Sagl

Via Stefano Franscini 2A
6833 Vacallo - Switzerland
CHE-192.005.916

info@blackiot.ch
www.blackiot.ch



Order Code	Description
BLK-MYR-xxxxx	Mayreau – Multi Sensor Board